



CAMWorks®

A Geometric Product



www.camworks.com

Intelligent Machining through Automation

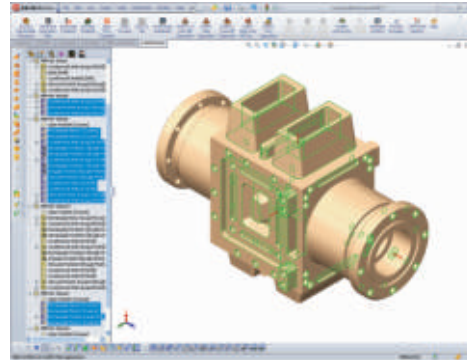
CAMWorks® is a 3D based CAM system that helps manufacturers improve productivity and profitability by combining world-class technologies and adaptable automation tools to enhance machining efficiencies.

Intelligent Machining through Automation

CAMWorks

Easy to learn. Easy to Use!

CAMWorks is an intelligent, intuitive CAM application that eliminates the drudgery of CNC programming. In today's manufacturing scenario, getting products to market faster, more efficiently and within budget is essential. To achieve this level of complex hands-free programming, CAMWorks incorporates intelligent machining through automation.



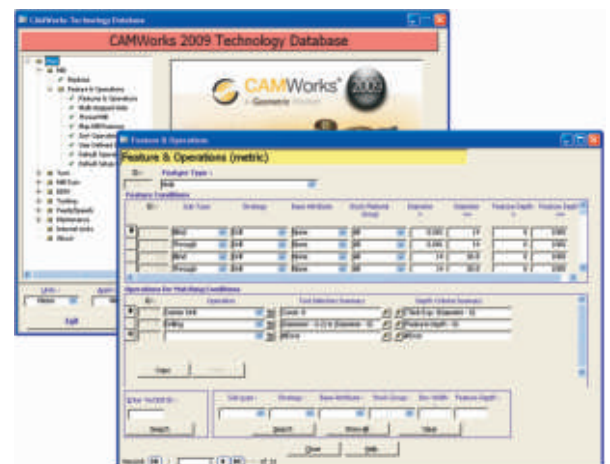
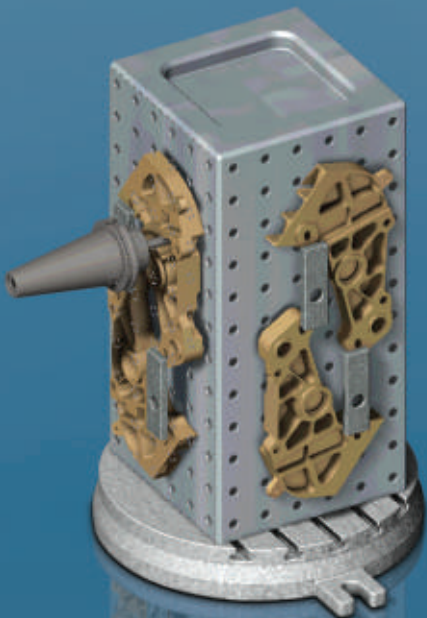
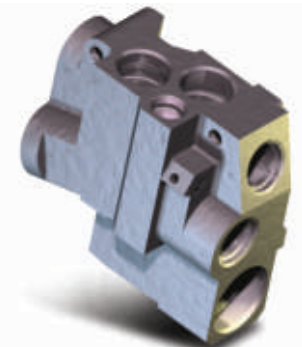
Minimize Efforts

CAMWorks pioneering **Automatic Feature Recognition (AFR)** Technology analyzes the solid model geometry and identifies mill features such as holes, slots, pockets, and bosses; turning features such as outside and inside profiles, faces, grooves and cutoffs; and wire EDM features such as die openings. AFR recognizes features regardless of the CAD system in which they were created.

Automate and Control intelligently

Geometric Technologies' innovative TechDB™ (Technology Database) is designed to significantly reduce the time required to generate machining strategies and processes. Using knowledge-based machining technology, the database associates tooling, operation strategies and machining parameters to the features. When operations are generated, CAMWorks applies these settings automatically. To further enhance the automation process, the knowledge-based rules in the TechTB are fully customizable to apply your company's best practices.

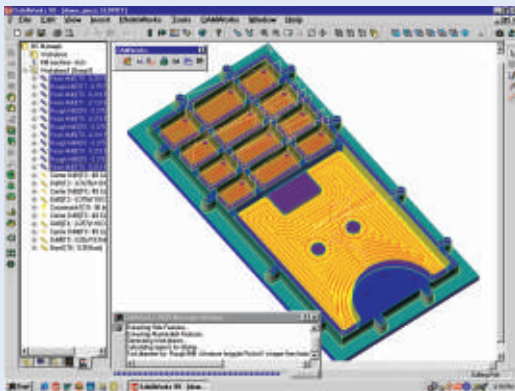
While CAMWorks promotes saving time through automation, at any time in the process, full interactive manual control is available.



2.5 Axis Milling

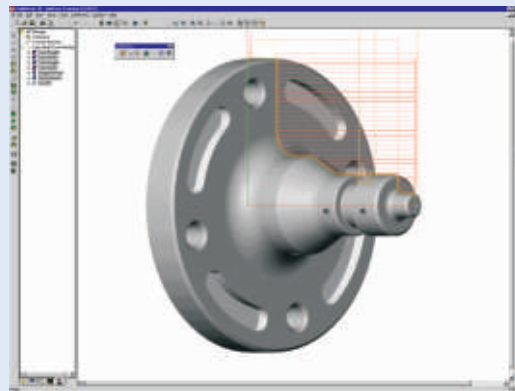
Includes automatic roughing, contouring (finishing), thread milling and single point (drilling, boring, reaming, tapping) cycles

- Cutting cycles provide fast and gouge protected toolpaths
- Automatic tool path optimization to increase program efficiency



2 and 4 Axis Turning

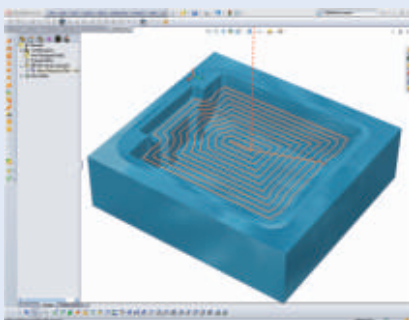
- Incorporates error free and gouge protected tool paths
- Support for sub-spindles and twin turrets
- Support for canned and long code output
- Increased cutting efficiency from Work in Process (WIP) machining



3 Axis Milling

Includes 2.5 axis capabilities plus routines to machine complex, contoured surfaces routinely encountered in mold making and aerospace applications.

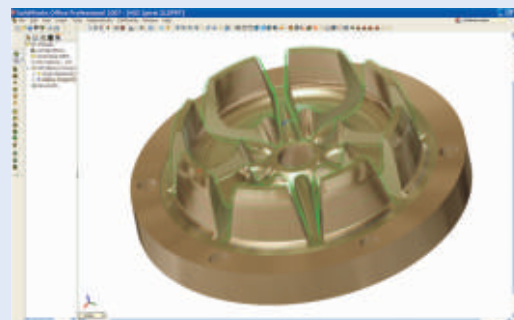
- The 3 Axis cycles have been developed for speed, accuracy and efficient memory usage
- Simple and complex parts can be cut quickly and accurately with a high quality toolpath
- Multi-tasking for improved speed and efficiency
- Adaptive roughing can reduce machining time up to 40% over conventional roughing with less wear



Multi Axis Milling

Machine complex parts including automotive port finishing, impellers, turbine blades, cutting tools, trimming/deflashing, and undercut machining in mold and die making.

- Advanced controls for machining complex 3-axis parts, including 3-axis undercut machining.
- Supports full 4 and 5 Axis simultaneous motion
- Shorter cutting tools provides increased rigidity and allows to machine at higher speeds with no loss in accuracy. The result is better surface quality and reduced finishing time.
- Generating 5 Axis swarf toolpaths instead of traditional 3 Axis toolpaths can result in fewer cut passes and improved surface finish



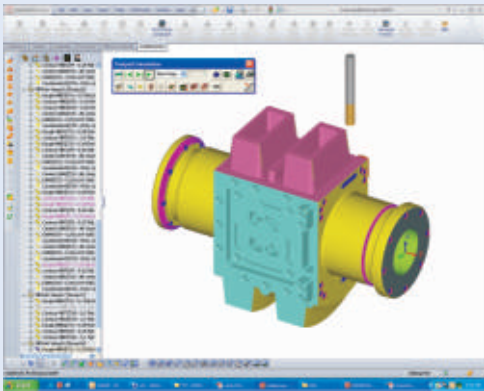


Capabilities

Mill –Turn

Includes all milling and turning capabilities for multitasking machine centers.

- Supports C, Y and B axis machining at compound angles
- Supports up to 5 axis simultaneous machining



Universal Post Generator

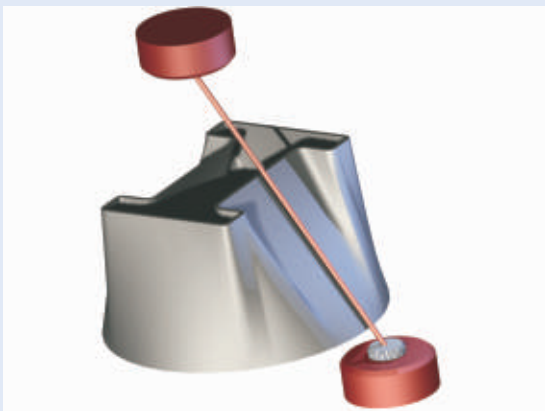
The CAMWorks integrated post processor supports virtually any CNC machine tool. The quality NC code that is generated can be optimized for your facility's machines and production methods with the Universal Post Generator (UPG), which is a standalone utility included with CAMWorks. The easy-to-use graphical interface of the UPG is designed so users can quickly customize post processors to generate edit-free code for their machining environment.

Machine Simulation

CAMWorks provides a realistic simulation of the complete machine tool, and enables collision checking between the tool and the machine components. The simulation shows the tool path on the actual 3D model. The complete machine tool can be created including axis configurations up to 5-axis. The image can be manipulated during simulation to provide closer representations and views from different angles.

WIRE – EDM

- Allows 2.5 Axis and 4 Axis cutting operations for creation of rough, skim and tab cuts
- Options are provided to order the cuts when machining parts with multiple pocket (die) areas



High Speed Machining with CAMWorks

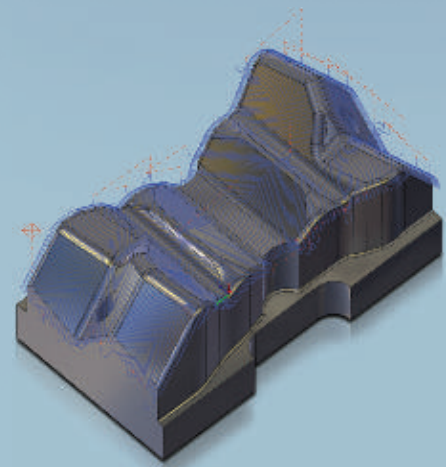
Powerful fully integrated strategies to boost the productivity of any CNC

Today's marketplace demands shorter lead times, lower costs and improved quality. Advanced toolpath tactics increase machining productivity by avoiding sharp angles to ensure that the tool maintains maximum contact with the part, optimizing non-machining moves to reduce air-cutting, and generating smooth and tangential lead ins/ lead outs.

Efficient, smooth and gouge-free toolpaths help to maintain continuous machine tool motion for:

- Higher feedrates
- Improved surface finish
- Improved life of cutters and machine tools

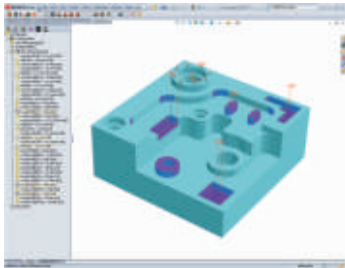
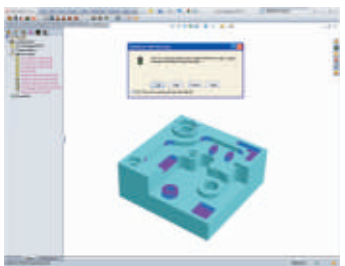
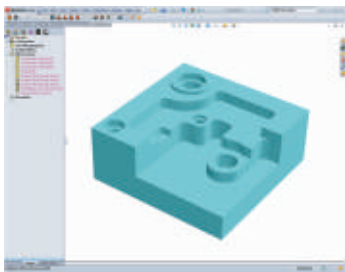
The versatile market-proven high speed machining strategies in CAMWorks deliver advanced machining and linking solutions for your molds, tools, dies and complex multi- axis parts.





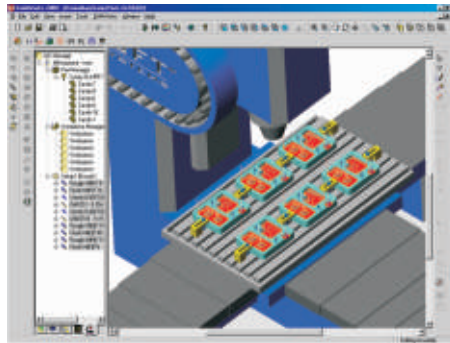
Associative Machining

The intelligent connection between the solid model and tool path generation provides associativity between CAD and CAM functions. CAMWorks identifies and recalculates toolpaths based on the changes to the part model. For example, when the depth of a pocket is changed, CAMWorks can update the toolpath automatically.



Multiple Part and Production Machining

CAMWorks supports CNC programming of multiple parts for production machining and offers an accurate representation of the virtual machining environment. The design and layout of machine components, parts, work pieces, clamps and fixtures provide a realistic representation of the machining environment. This not only helps the manufacturing engineer as he develops the program, but also the machine operator on the shopfloor, who has access to setup documents that show where the parts and fixtures are positioned on the machine. Moreover, the tool also allows the engineer to machine separate fixtures or operations within one program, graphically.

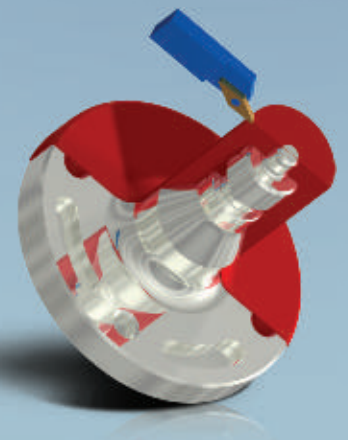


CAMWorks Solids

CAMWorks Solids, an integrated solid modeler, can be packaged with CAMWorks. This combination allows CAMWorks to function as a stand-alone product without the need to purchase an additional solid modeler. It also allows import of popular file formats including STEP, IGS and Parasolid files for tool path generation and simulation.

“As an innovator, I was looking for a CAM application which I could use to bring my ideas to reality. CAMWorks did just that for me. It was very easy to learn and has really helped me machine parts that were not feasible with other CAM software.”

Chris Gamble
Owner,
SunTech Innovations





1st Gold Partner CAM product on SolidWorks

- Seamlessly integrated within the SolidWorks environment
- Automatically accommodates changes to the part model
- Eliminates time consuming CAM system rework due to design updates
- Enables true associative machining

Call Your Distributor Today!

Geometric Technologies sells CAMWorks through a worldwide network of distributors. For more information on how CAMWorks can make your company more successful, contact your local Geometric Technologies distributor.

To locate a distributor in your area, visit www.camworks.com

Contact Us

Phone

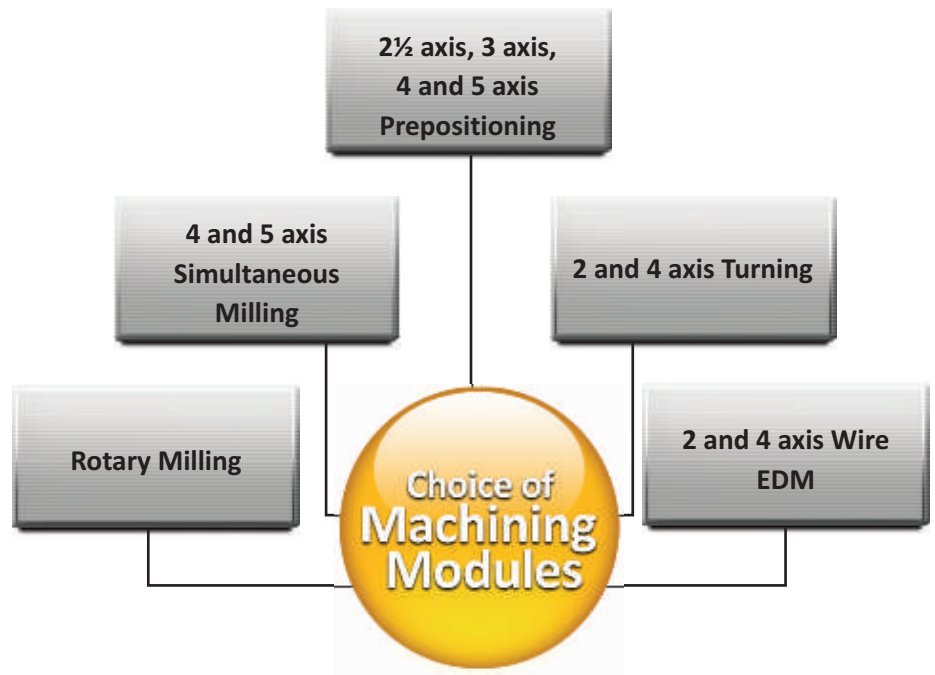
US: +1.480.367.0132

Europe: +49.7141.207.550

APAC: +91.22.67056880

email

cw.marketing@geometricglobal.com



Each module provides an advanced collection of cutting strategies and time saving features to help automate the machining process.

CAMWorks can be purchased to run with SolidWorks or as part of a cost-effective package that includes CAMWorks Solids, an integrated solid modeler.

CAMWorks is available for 32 bit as well as 64 bit processors.

About Geometric

Geometric is a specialist in the domain of engineering solutions, services and technologies. Its Desktop Products and Technologies (DPT) business unit develops cutting-edge point productivity solutions that enhance design and improve manufacturing operations. The end-user products from Geometric include CAMWorks®, eDrawings® Publisher, DFMPPro, GeomCaliper® and 3DPaintBrush™, and the key technologies are NestLib®, Feature Recognition (FR), GeomDiff and 3DSearchIT®. Geometric licenses these technologies to OEM partners and also designs and implements customized process solutions using these technologies for industrial customers.

For further details about Geometric's DPT business unit, please visit www.geometricglobal.com/products

The copyrights/trademarks of all products referenced herein, are held by their respective companies.



Geometric

Engineering | PLM | Technology

www.geometricglobal.com

www.camworks.com