

Installation of SOLIDWORKS Design Offer

Role assignments and installation of SOLIDWORKS
Design Offer

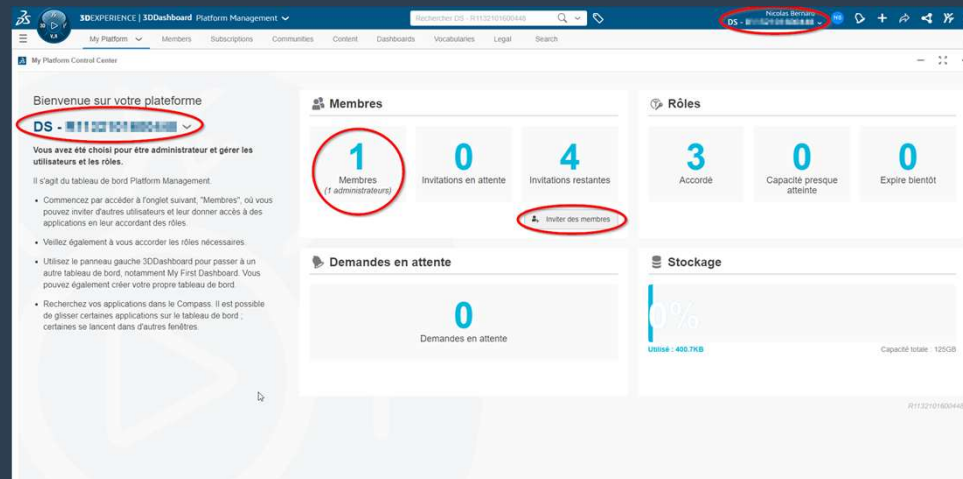
Cadmes



3DEXPERIENCE®

01. Creation and verification of access

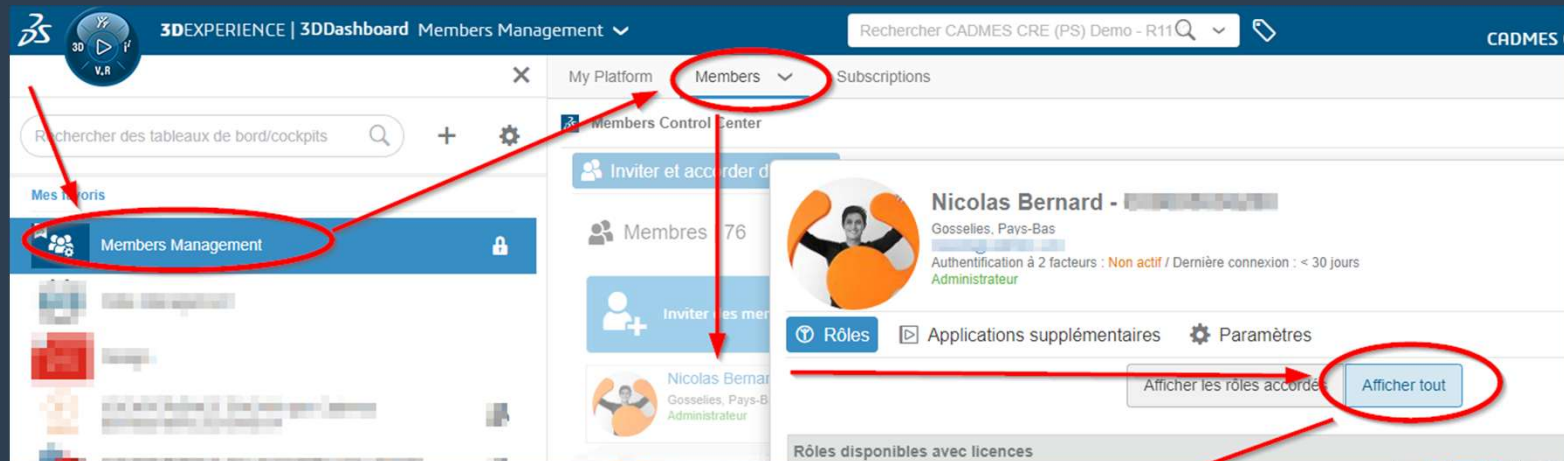
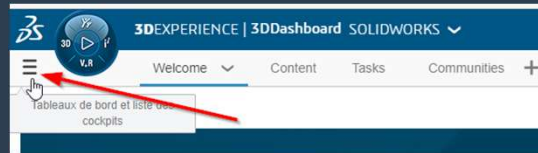
- Log in to: <https://eu1-ifwe.3dexperience.3ds.com/>
 - After logging in, the address becomes <https://r123456789-eu1-ifwe.3dexperience.3ds.com/>
 - The number in red is your tenant number, your private space.
 - The first person to log in is the administrator and uses your first license.
 - They can transfer their administrator role to one or more other people.
 - They can invite other members (by email) and assign them roles.



02. Role assignments (1)

If you are a SOLIDWORKS user:

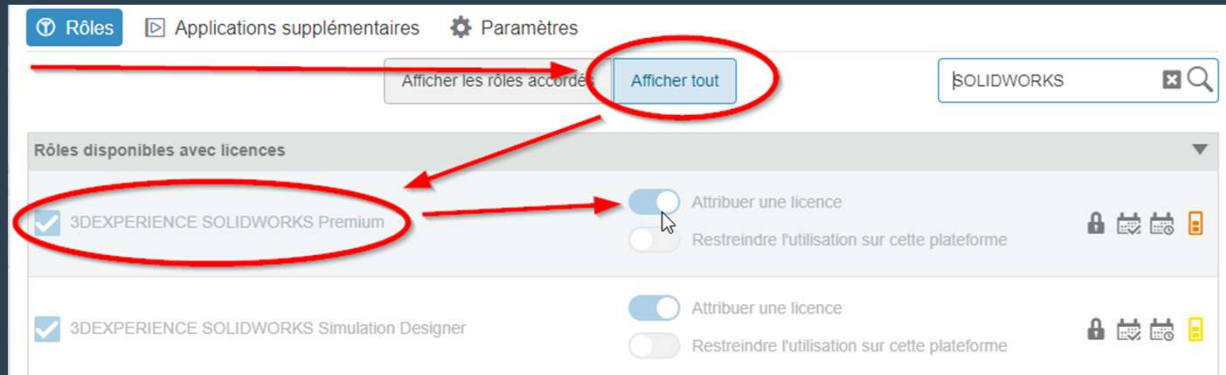
- “Members Management” dashboard
- Members tab
- Select yourself
- Click on “Show all” (roles)
- “Assign a license” for ...



02. Role assignments (2)

You have SOLIDWORKS Design Standard/Pro/Premium Offer (x1WO-OC/x2WO-OC/x3WO-OC):

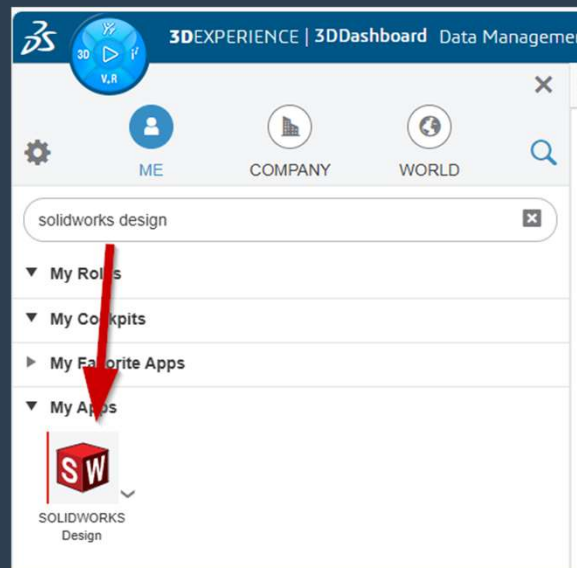
- SOLIDWORKS Design Offer (automatic prerequisite)
- 3DSwymer (automatic prerequisite)
- Collaborative Industry Innovator



03. Installing the 3DEXPERIENCE Launcher (1)

To install SOLIDWORKS Design:

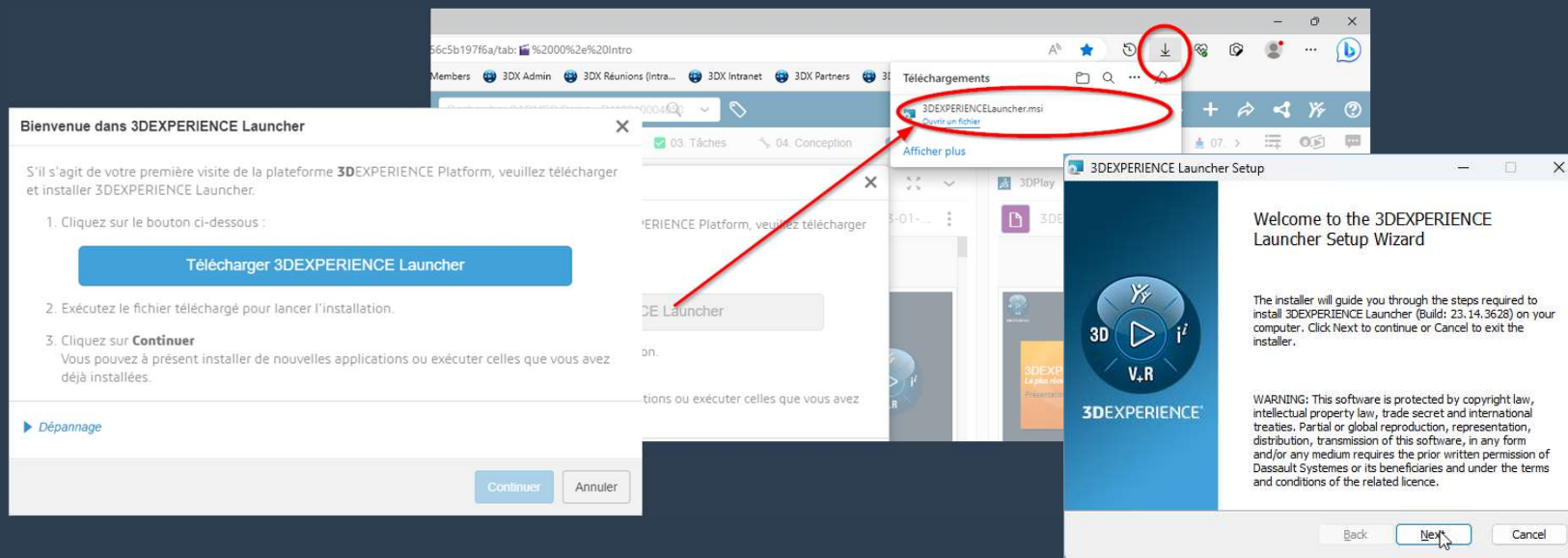
1. Click on the Compass
2. Search for the “SOLIDWORKS Design” application
3. Follow the instructions to first install the “3DEXPERIENCE Launcher”



03. Installing 3DEXPERIENCE Launcher (2)

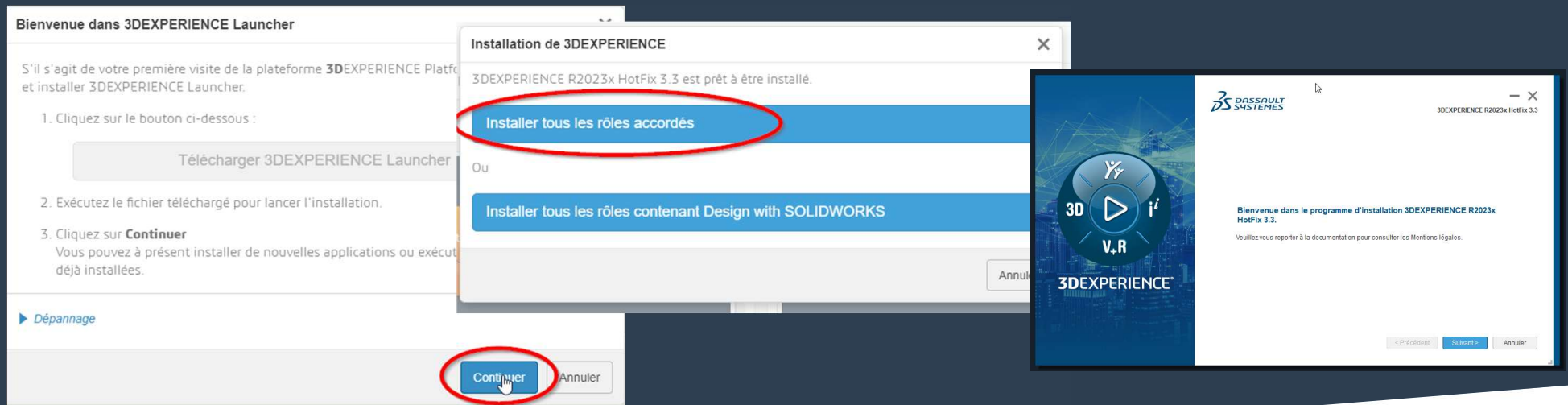
Follow the instructions to install the “3DEXPERIENCE Launcher” first.

1. Download 3DEXPERIENCE Launcher.
2. Run 3DEXPERIENCE Launcher.msi.
3. Follow the instructions.



04. Installing SOLIDWORKS Design (1)

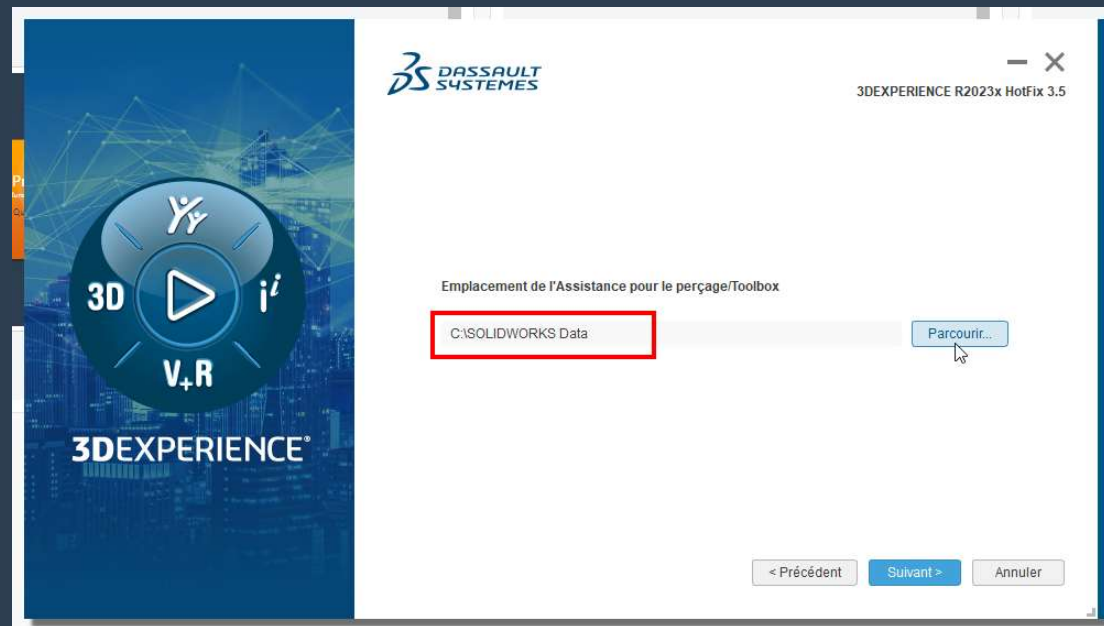
1. After installing the “3DEXPERIENCE Launcher,” click Continue.
2. If necessary, click “SOLIDWORKS Design” again.
3. Click “Install all granted roles.”



04. Installing SOLIDWORKS Design (2)

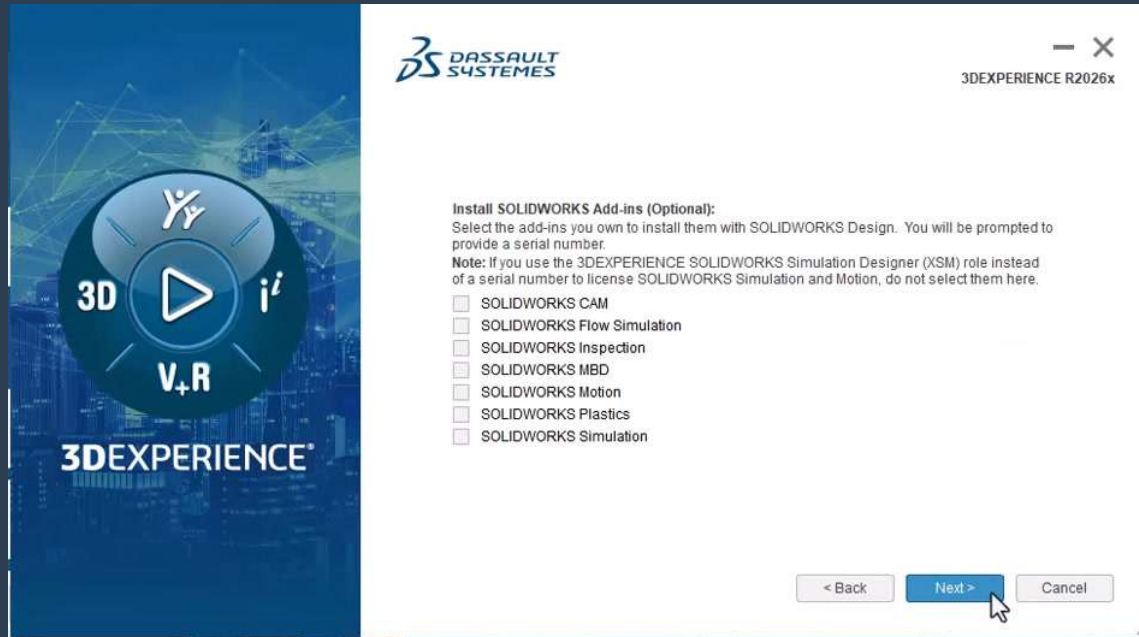
1. Leave the default options EXCEPT for the Toolbox!

Tip : C:\SOLIDWORKS Data



Add a SOLIDWORKS add-in

- If you have a SOLIDWORKS add-on with a serial number, check it at this step.



05. Launch SOLIDWORKS Design

To launch SOLIDWORKS Design, you must launch it from the platform:

1. Click on the SOLIDWORKS Connected application again.
2. SOLIDWORKS launches with the add-in connected to your platform.
3. To launch SOLIDWORKS from your desktop, double click on the shortcut created automatically.

